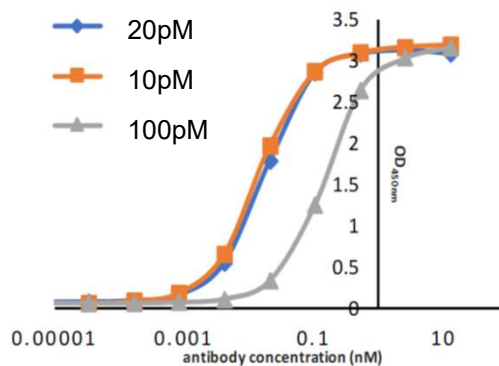


QMa**B**TM – Qu**i**ck Mono**clonal Antibody from Blood**

- Fast – three weeks post harvest
- Peripheral blood is used, no killing of animals
- Antibodies from multiple time points
- Entire B cell repertoire are used for selection
- High affinity antibodies are selected
- Functional assay can be used to select clones
- Highly diverse repertoires of VL and VH are obtained



QMa**B**TM – Qu**i**ck Mono**clonal Antibody from Blood**

