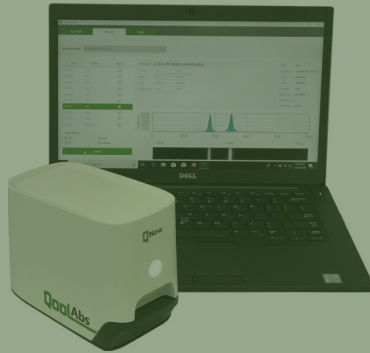


QNow Research Reader



Installation Guide

QoolAbs

Making Research Qool

For research use only. Not for use in diagnostic procedures.

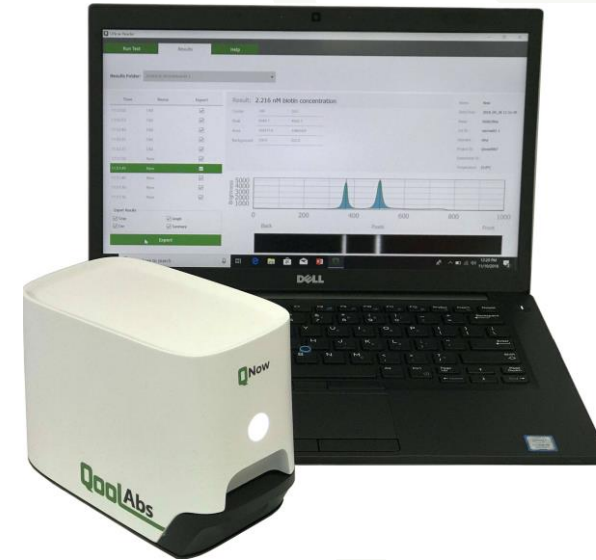
Version 1

November 05, 2018

Software Installation

QNow Research Reader

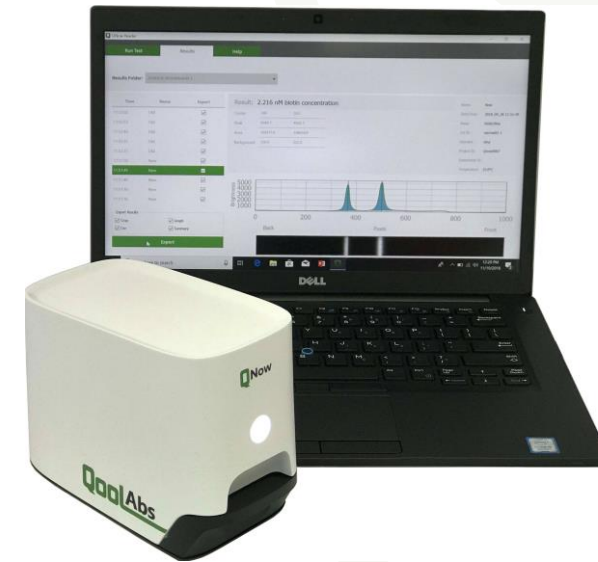
- Installing the reader software
- Installing the reader calibration file
- Upgrading or removing the software



Software Requirements

To use the reader you'll need a PC or laptop with the following:

- USB 3 ports
- Administrator access for installing the software
- Windows 8 or 10 (32 or 64 Bit)
- Microsoft Excel 2010 or newer
- (Optional) ImageJ, for viewing raw images



USB 3 Check

The reader requires a PC or laptop with USB 3 ports.

- If you connect the reader to a USB 2 port, the reader will not operate correctly.
- The USB ports on your computer should have the SS logo.



Reader Software Installation

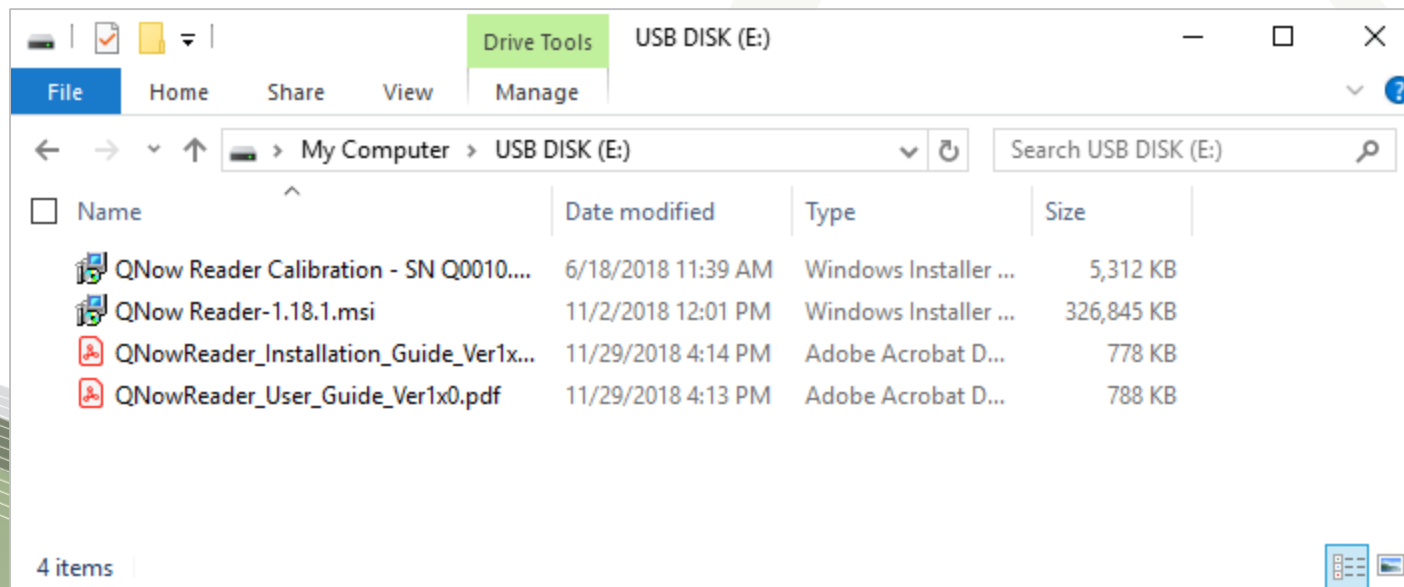
Making Research Qool



Reader Software Installation

Step 1

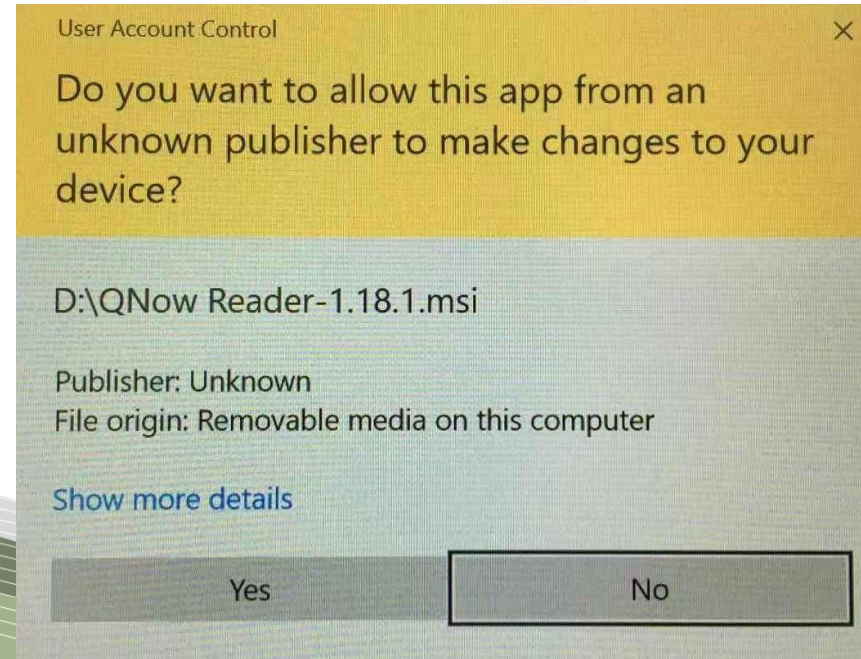
Open the installer folder, and run “**QNow Reader-xxx.msi**”, where the xxx is the version number of the software. In the screenshot below, it is 1.18.1:



Reader Software Installation

Step 2

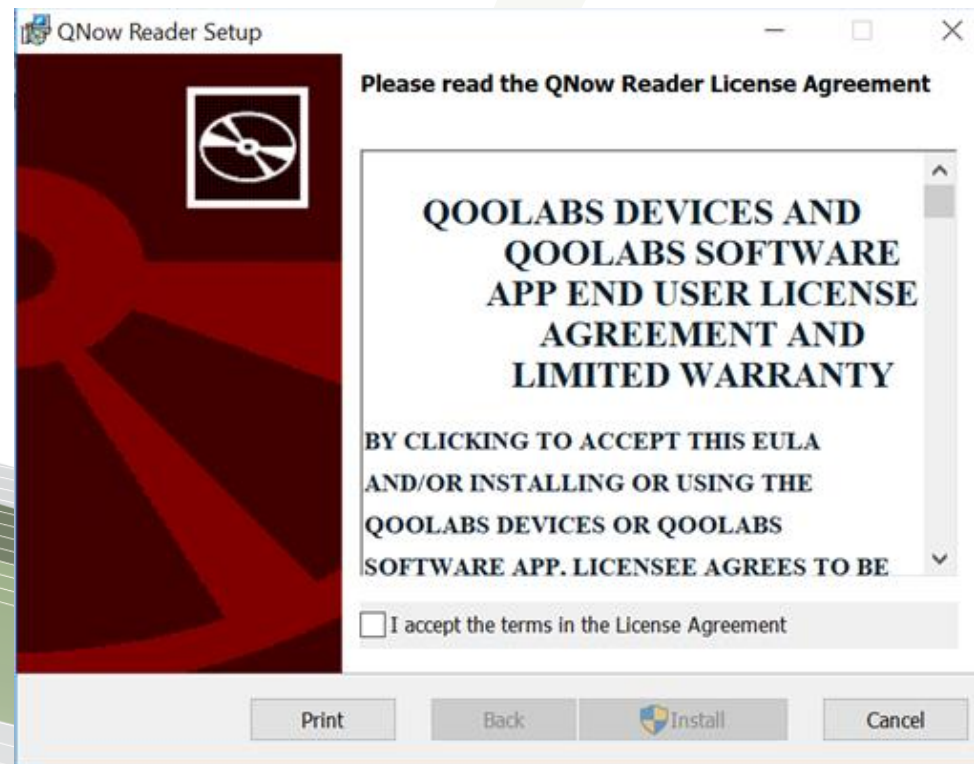
Click **“Yes”** if you see a popup asking if you want to allow the app to make changes to your PC. *To learn more details, click **“Show more details”***, then click **“Yes”**:



Reader Software Installation

Step 3

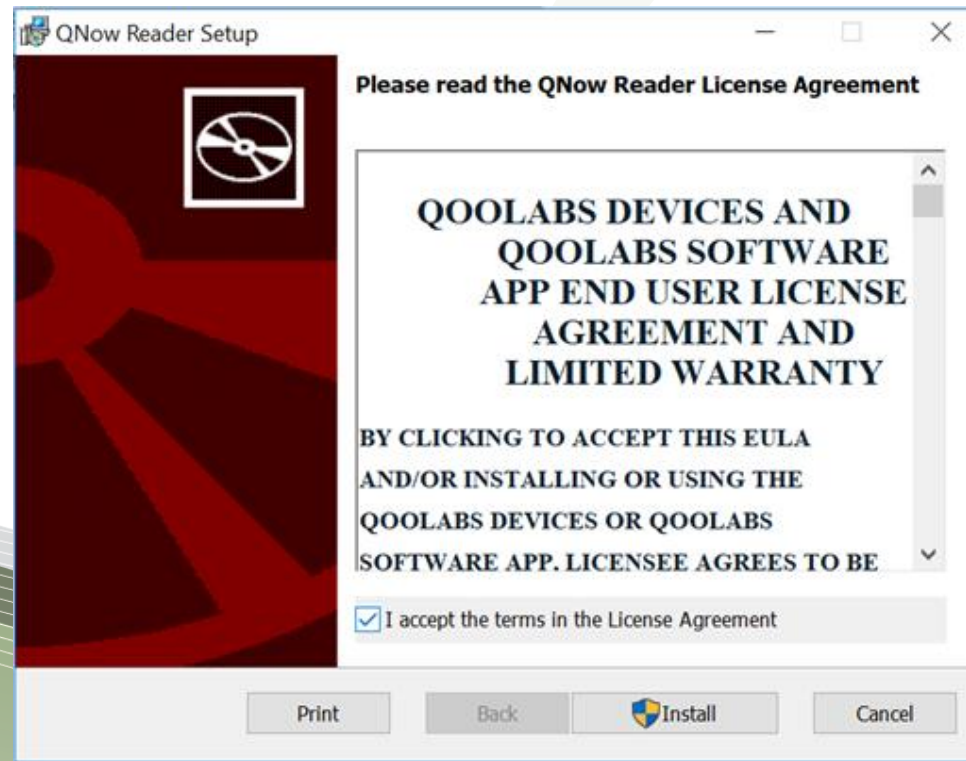
The Qnow Reader License Agreement window will pop up. Review the agreement and check the “I accept the terms in the License Agreement” to move on to the next step.



Reader Software Installation

Step 4

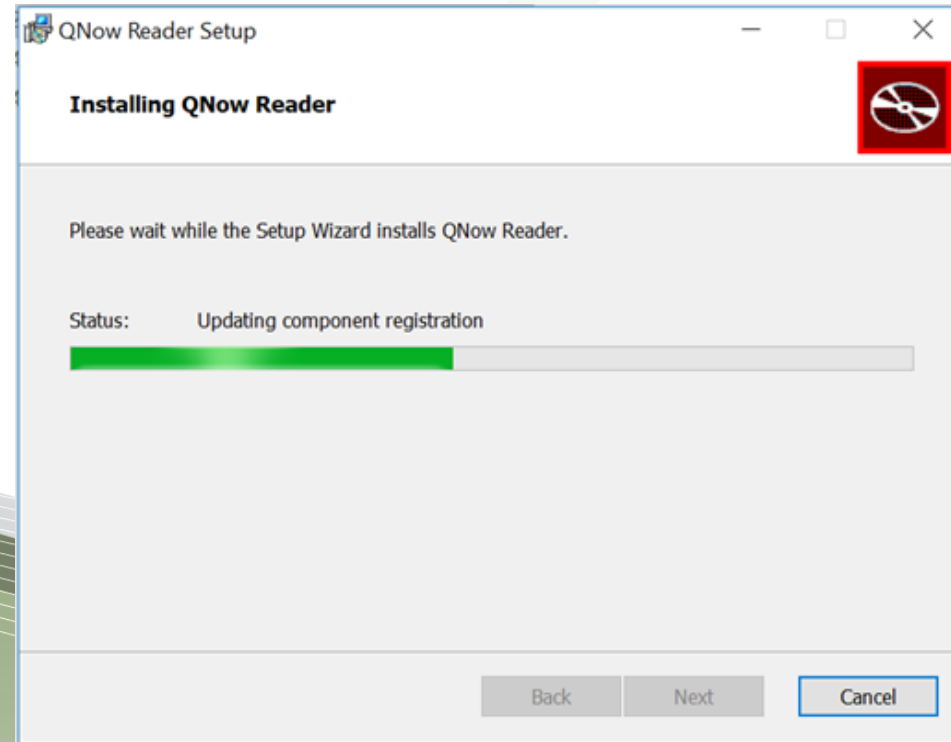
Click on "Install"



Reader Software Installation

Step 5

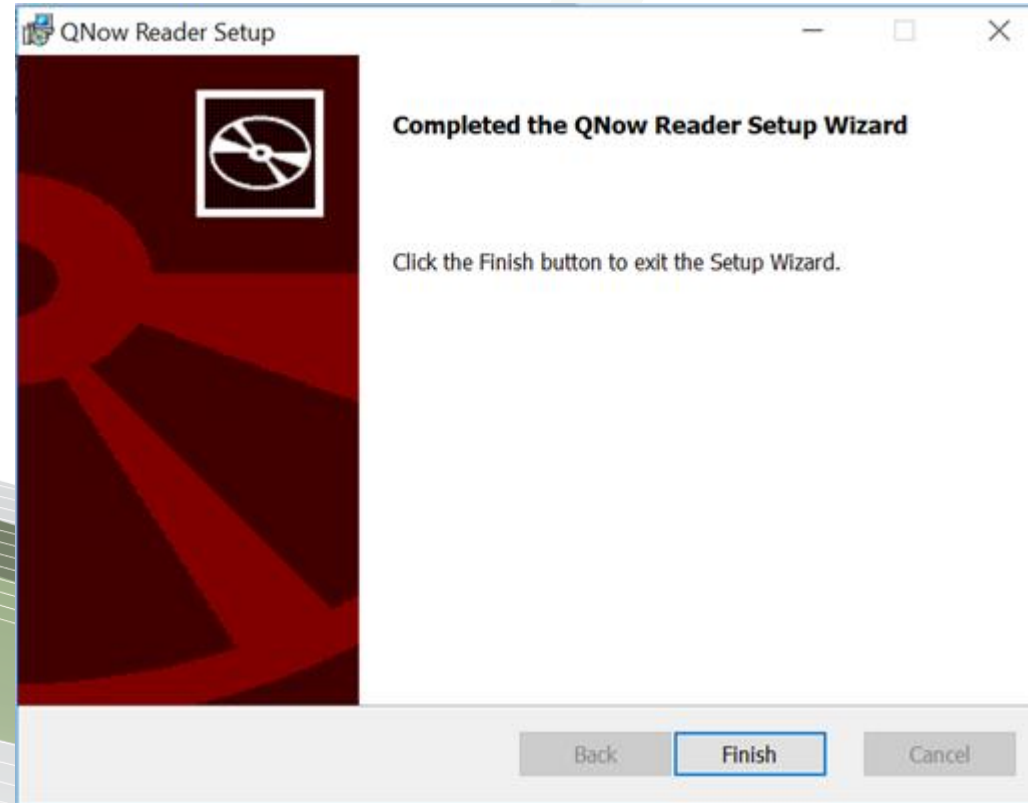
The software will now install – please be patient while the new files are copied.



Reader Software Installation

Step 6

Then click **Finish** when the installer is complete:



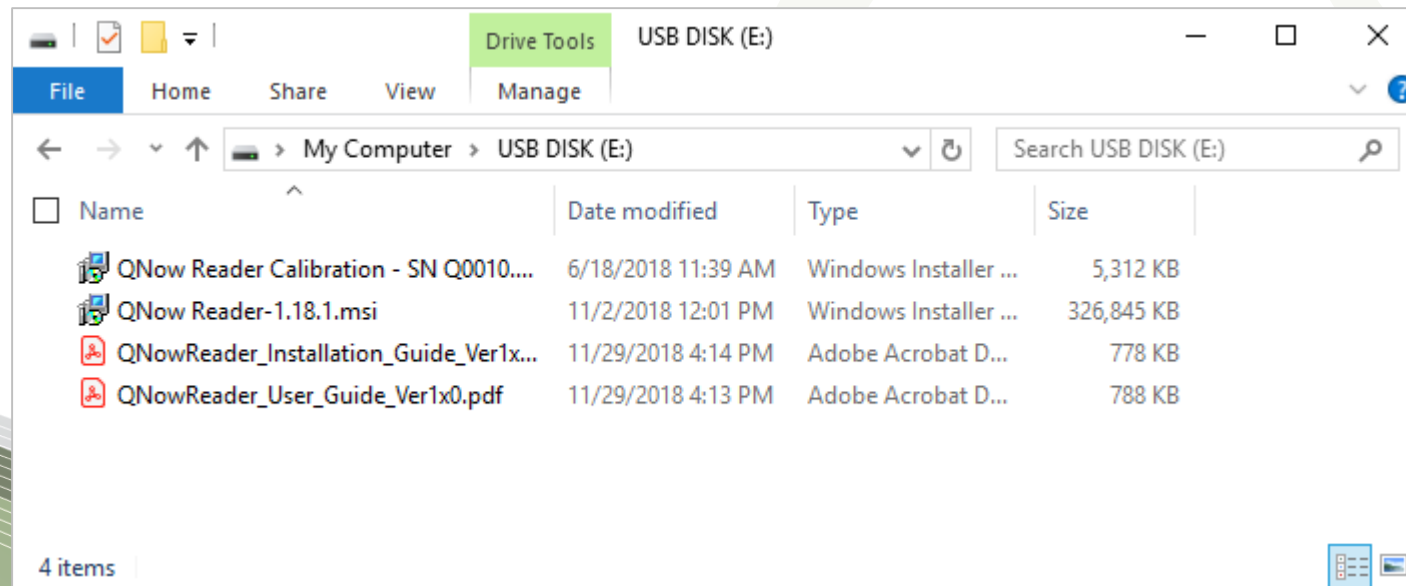
Reader Calibration Installation



Reader Calibration Installation

Step 1

Open the installer folder, and run “*Qnow Reader Calibration – SN Qxxx.msi*”, where Qxxx is the serial number of the reader:



Reader Calibration Installation

Step 2

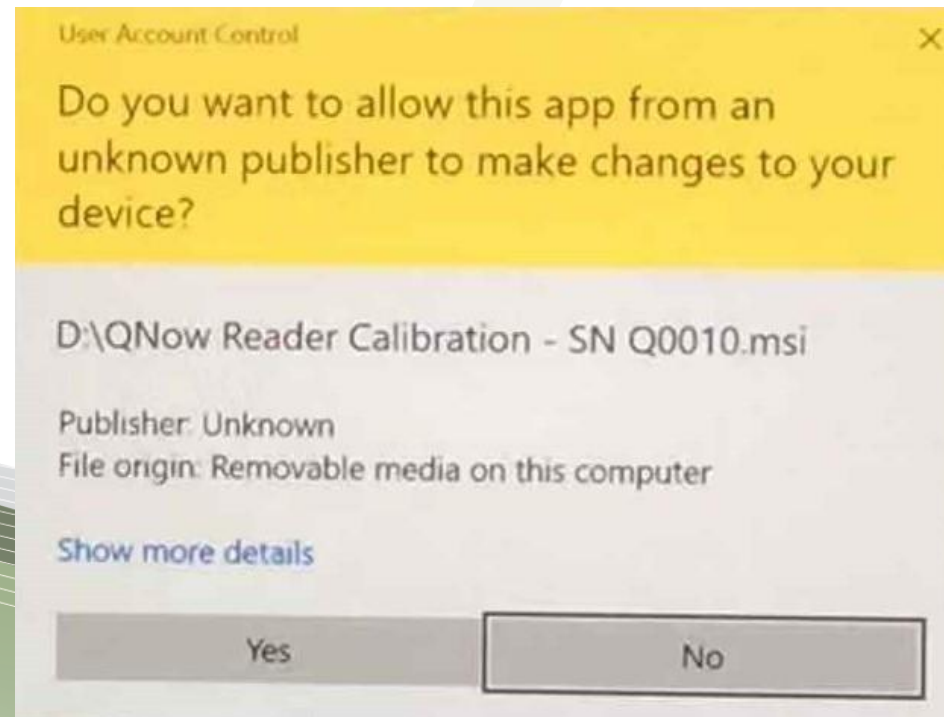
Then press “**Next**” once the installer loads:



Reader Calibration Installation

Step 3

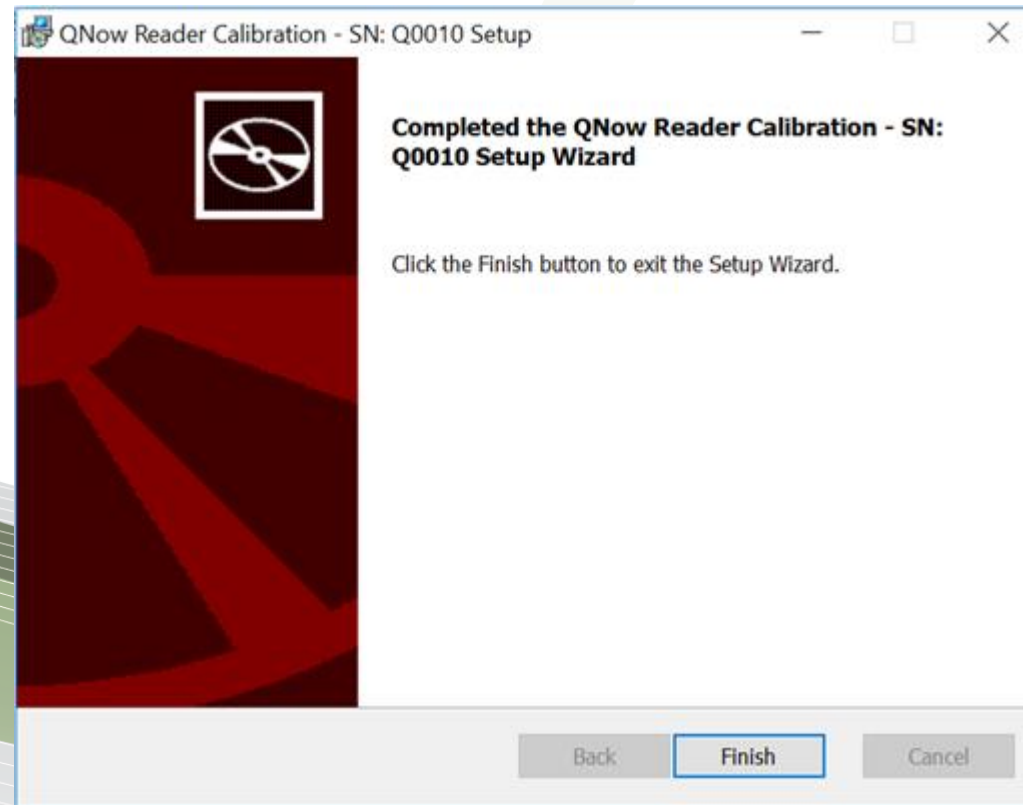
Click “Yes” if you see a popup asking if you want to allow the app to make changes to your PC:



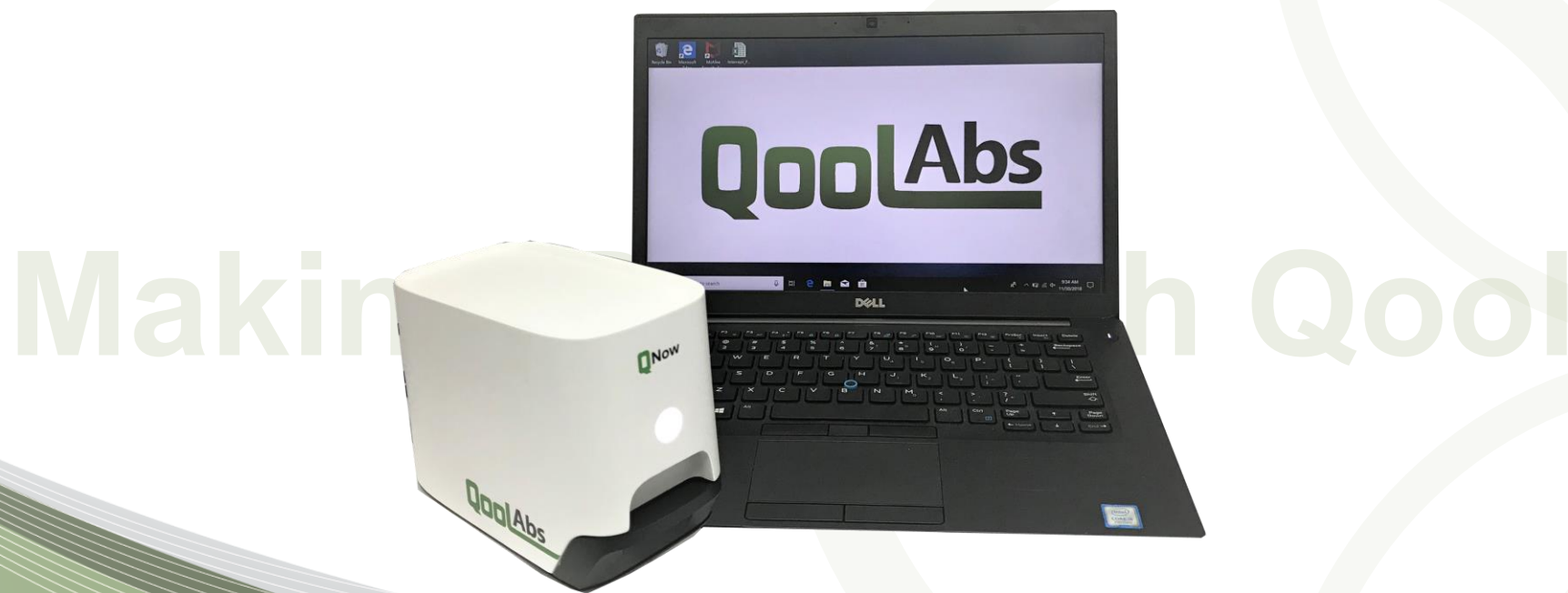
Reader Calibration Installation

Step 4

Finally, click **“Finish”** once the installer is finished copying new files:

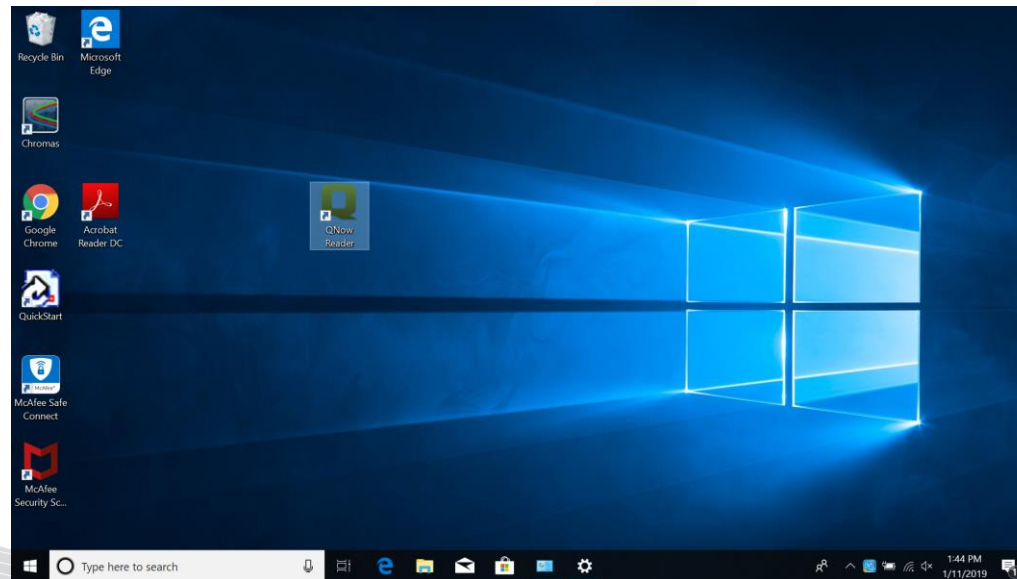


Running the Software



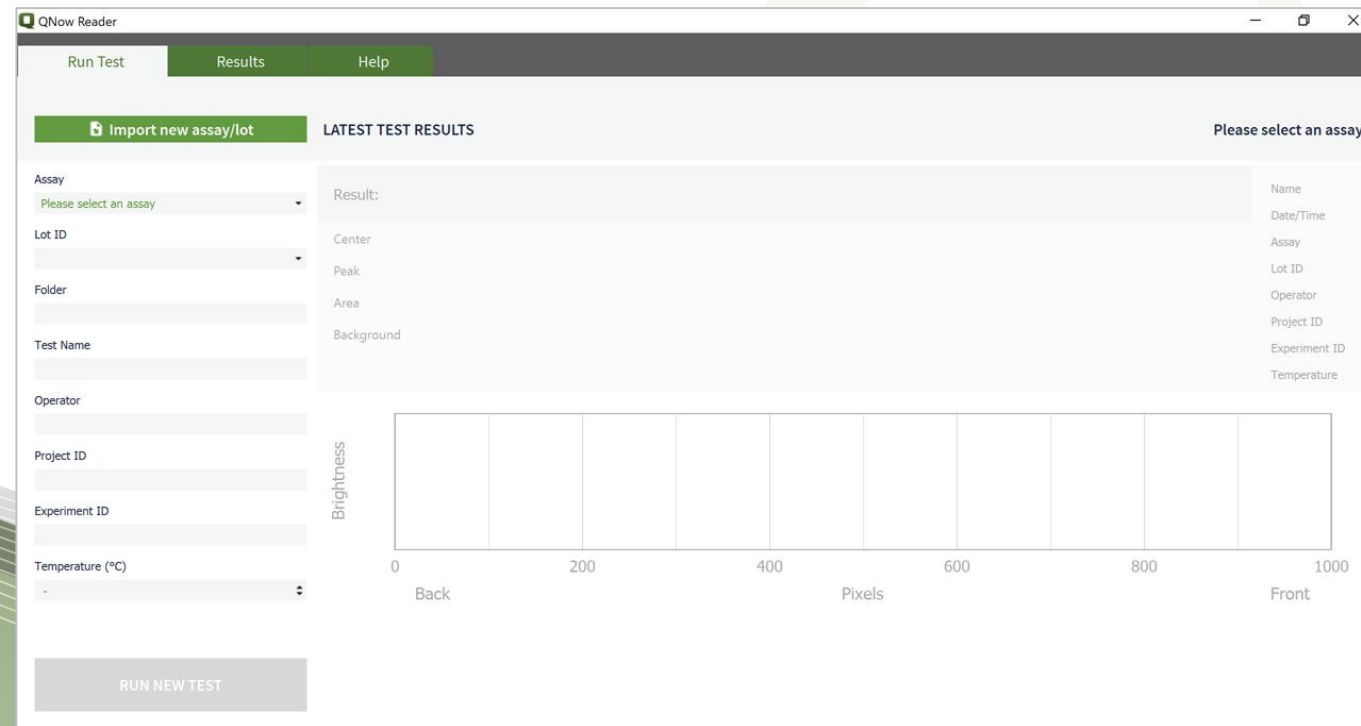
Running the Software

Plug the reader into the computer, if you haven't already. You can find the QNow software under the “**Start**” menu, or on the Desktop:



Running the Software

The software may take a minute to load the first time you use it. Once it loads you should see the following screen:



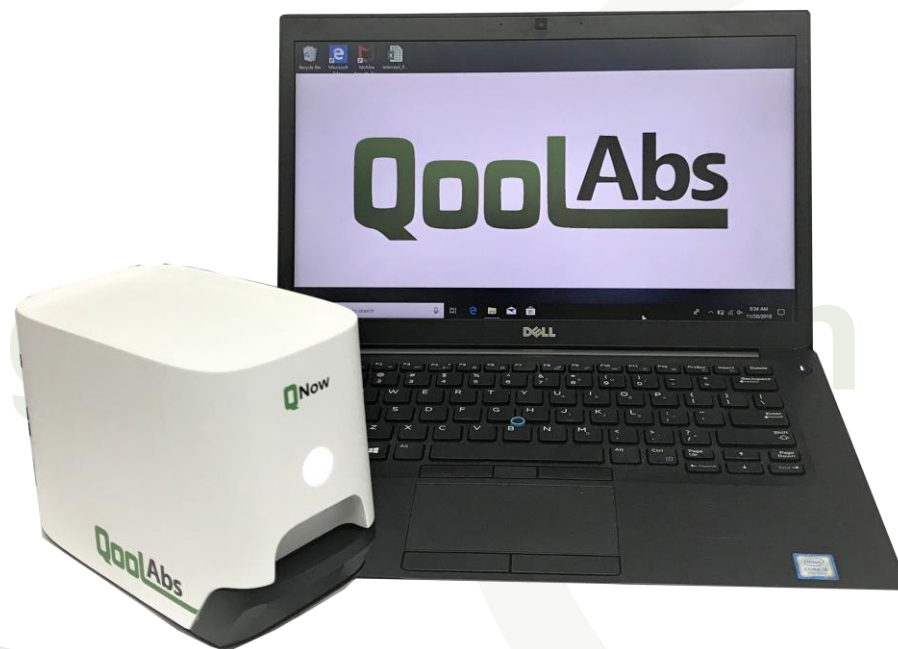
Running the Software

You can find all results, assay settings, and reader calibrations under *C:\Qnow*. For details of how to use the reader and software, refer to the **User Guide**.

Folder	Contains
C:\QNow\Assays	Assay settings & definitions
C:\QNow\Config	Reader calibration files
C:\QNow\Logs	Software log files
C:\QNow\Results	All assay results

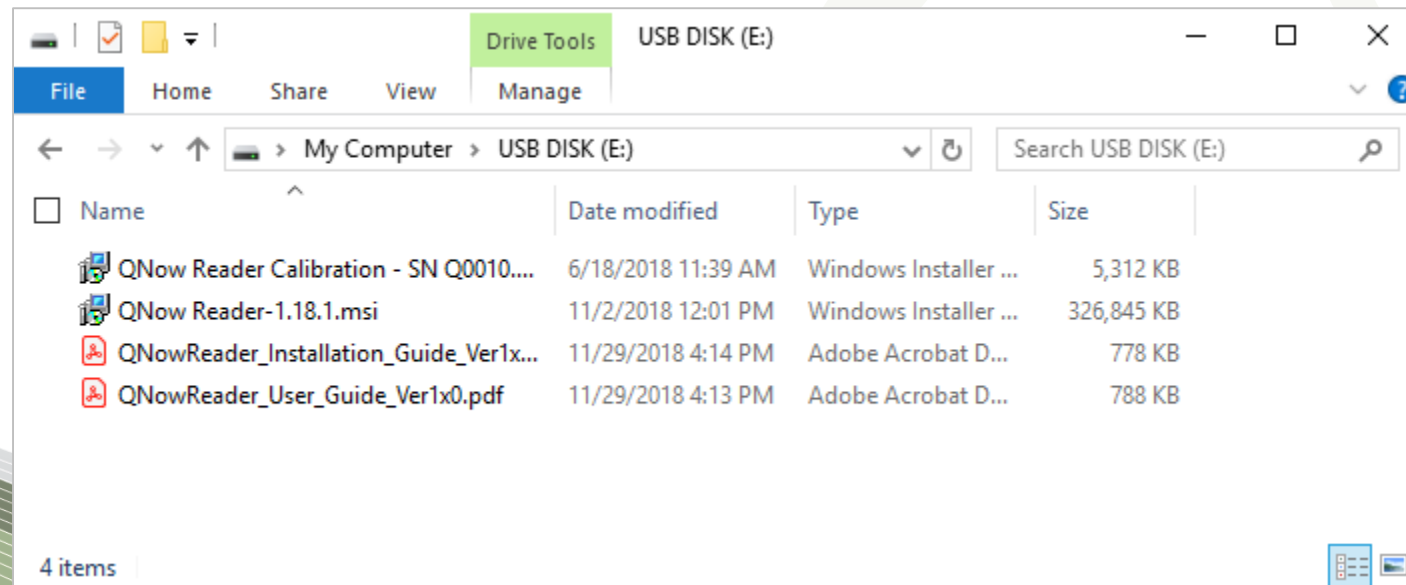
Upgrading the Software

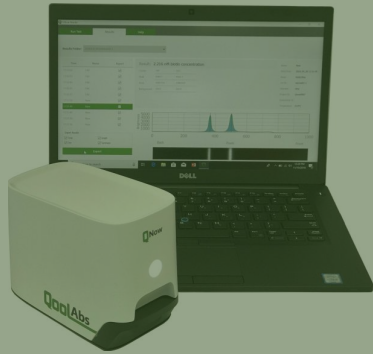
Making Research Qool



Upgrading the Software

To upgrade the software, run the latest installer.





QoolAbs

Making Research Qool